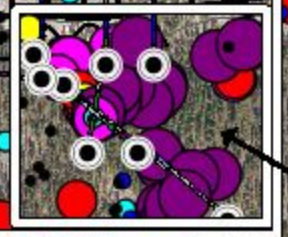
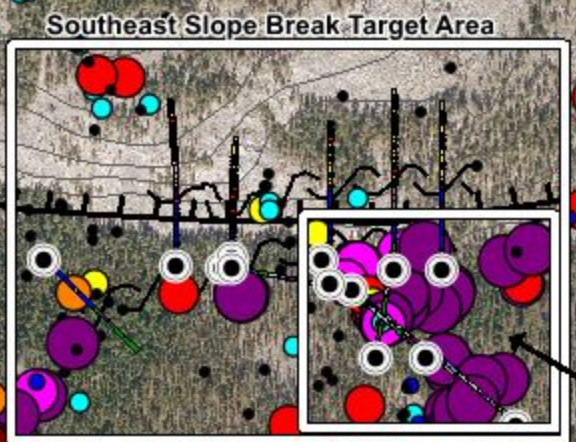
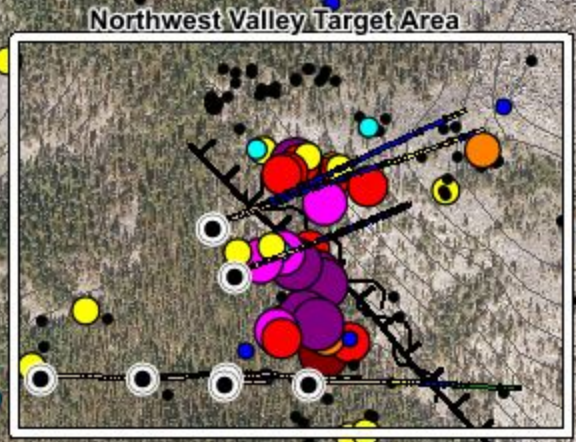




ROCK SAMPLES by Au ppm

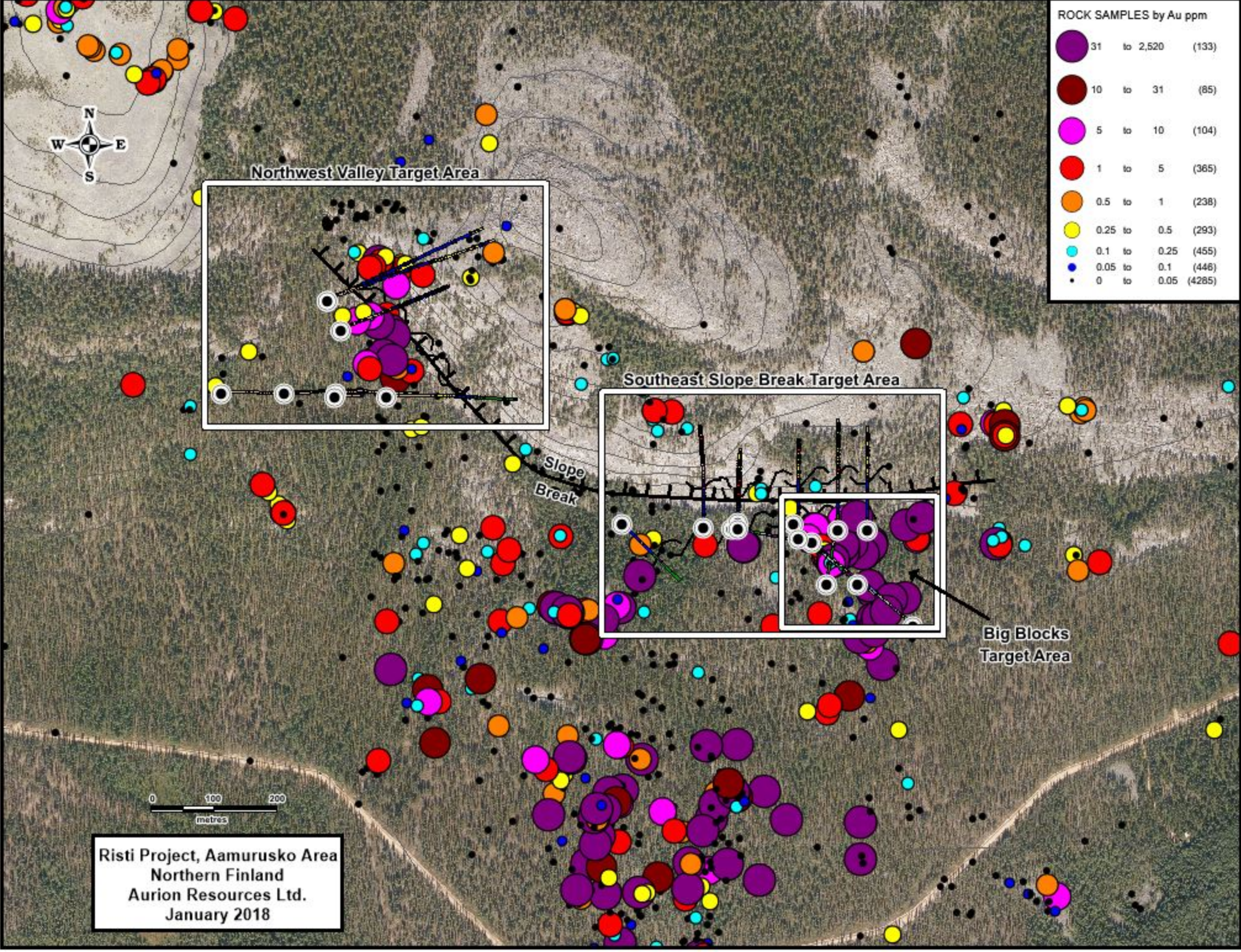
	31 to 2,520	(133)
	10 to 31	(85)
	5 to 10	(104)
	1 to 5	(365)
	0.5 to 1	(238)
	0.25 to 0.5	(293)
	0.1 to 0.25	(455)
	0.05 to 0.1	(446)
	0 to 0.05	(4285)



Slope Break



Risti Project, Aamurusko Area  
 Northern Finland  
 Aurion Resources Ltd.  
 January 2018



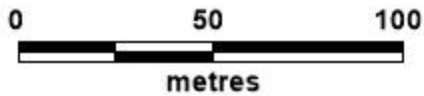
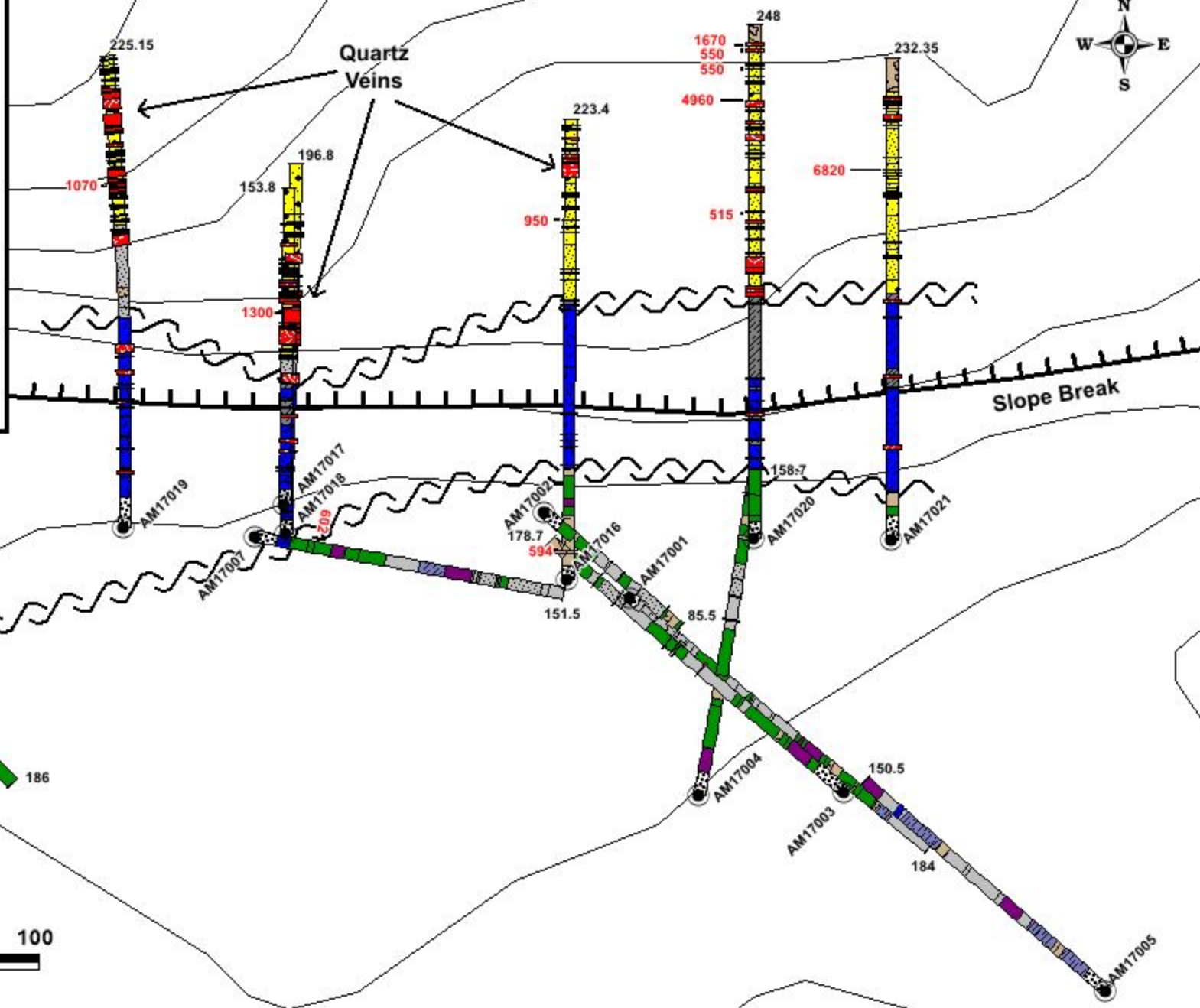


**Legend**  
**Lithologies and Veins**

-  overburden
-  ultramafic
-  lamprophyre dyke
-  basalt
-  mafic dyke
-  gabbro
-  volcaniclastic sediment
-  argillite, siltstone
-  arkose
-  arenite
-  greywacke
-  quartzite
-  quartzite with quartz pebbles
-  conglomerate, debris flow breccia
-  fault, breccia, shear zone
-  schist
-  lost or ground core
-  crack and seal vein
-  brecciated or massive vein, veinlet
-  stockwork veining, veinlet zone

Au assays >500 ppb labeled in red

# Southeast Slope Break Target

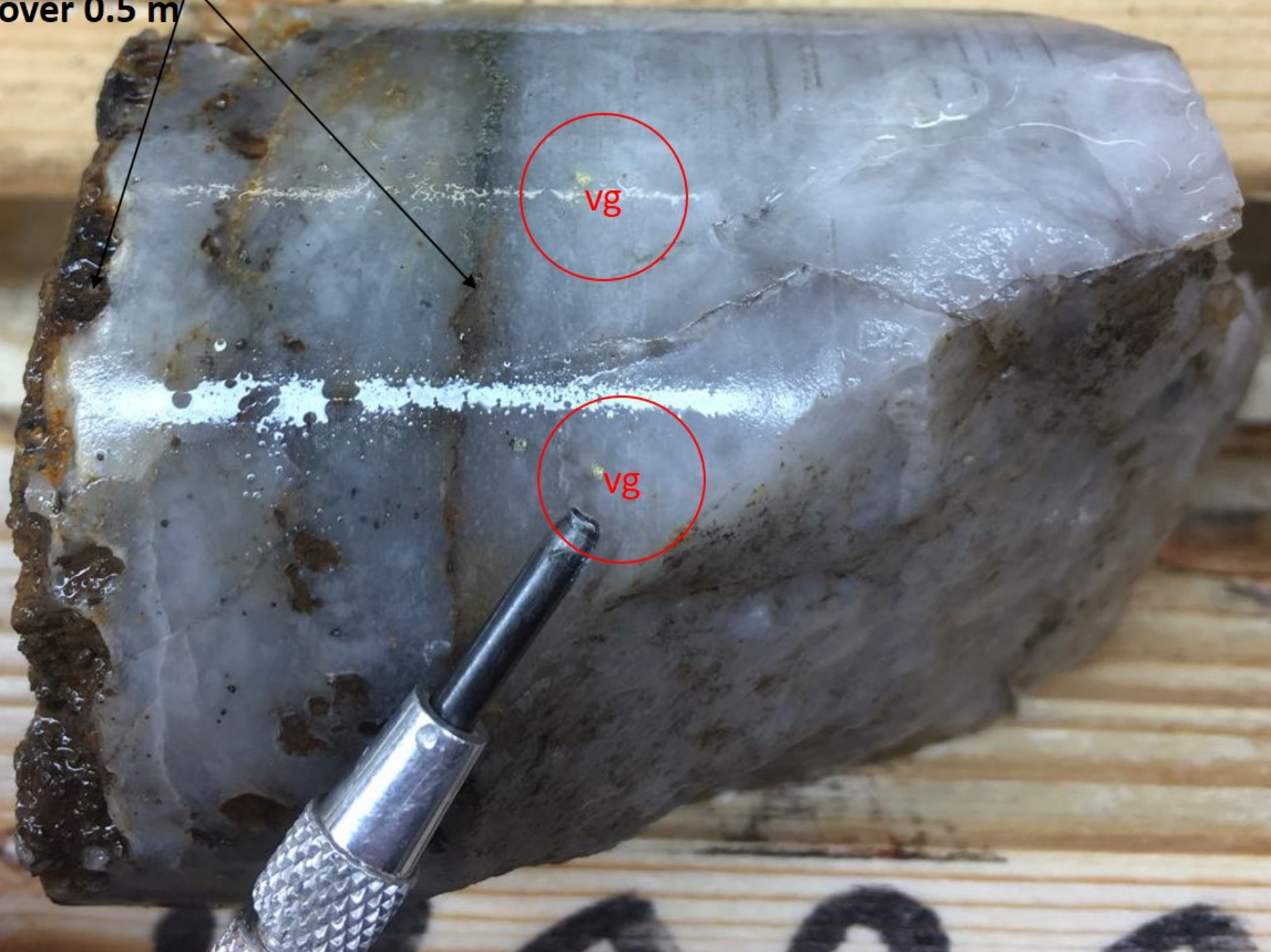






Drillhole AM17021 at 178.5 m

“crack and seal texture;  
6.8 g/t Au over 0.5 m”



**Crack and seal vein with VG in hole AM17013, 3.42 g/t Au**

