

Figure 1: Map of the eastern part of the Aurion-B2Gold JV area.

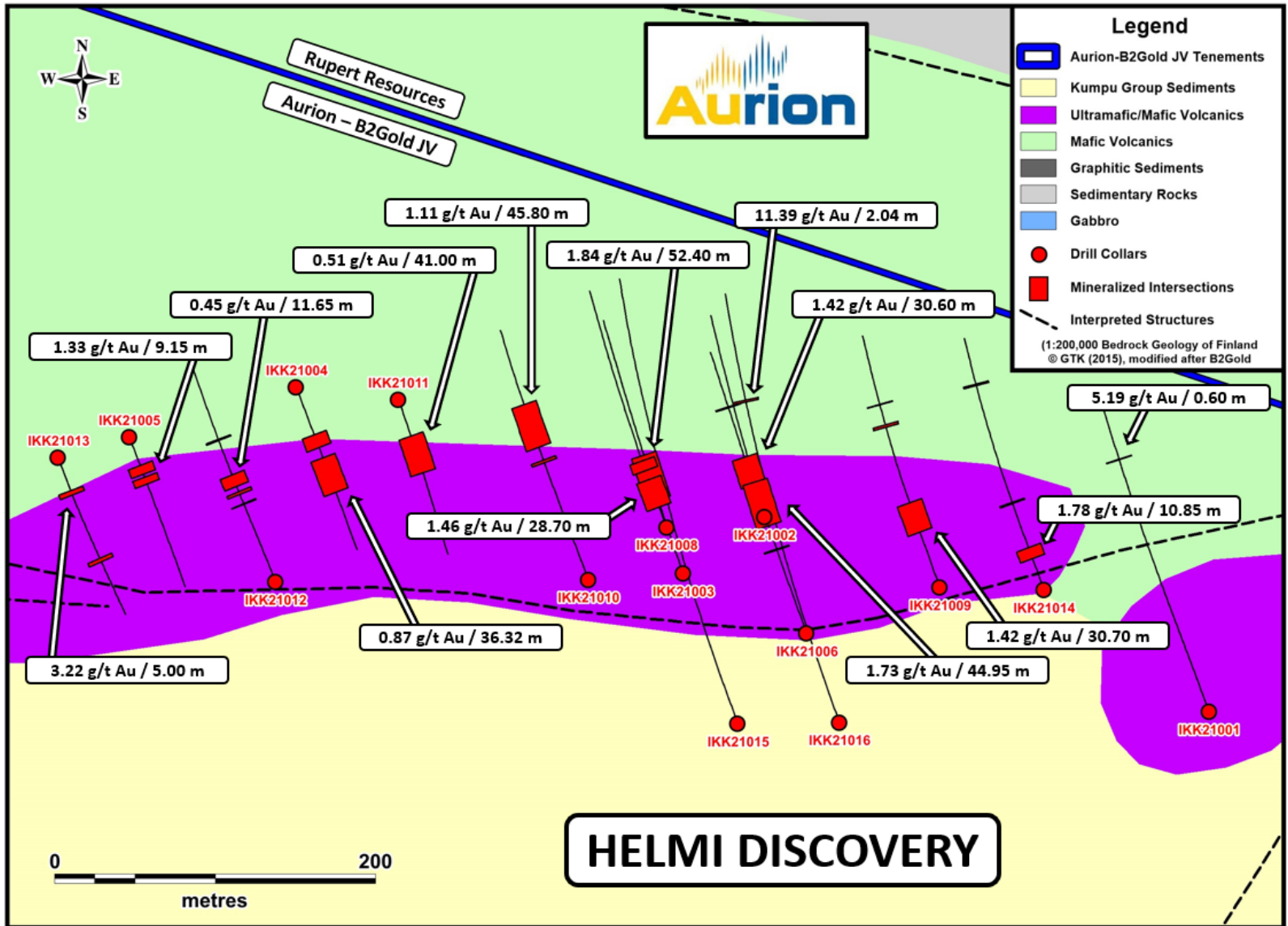


Figure 2: Drill hole locations. Simplified geology.

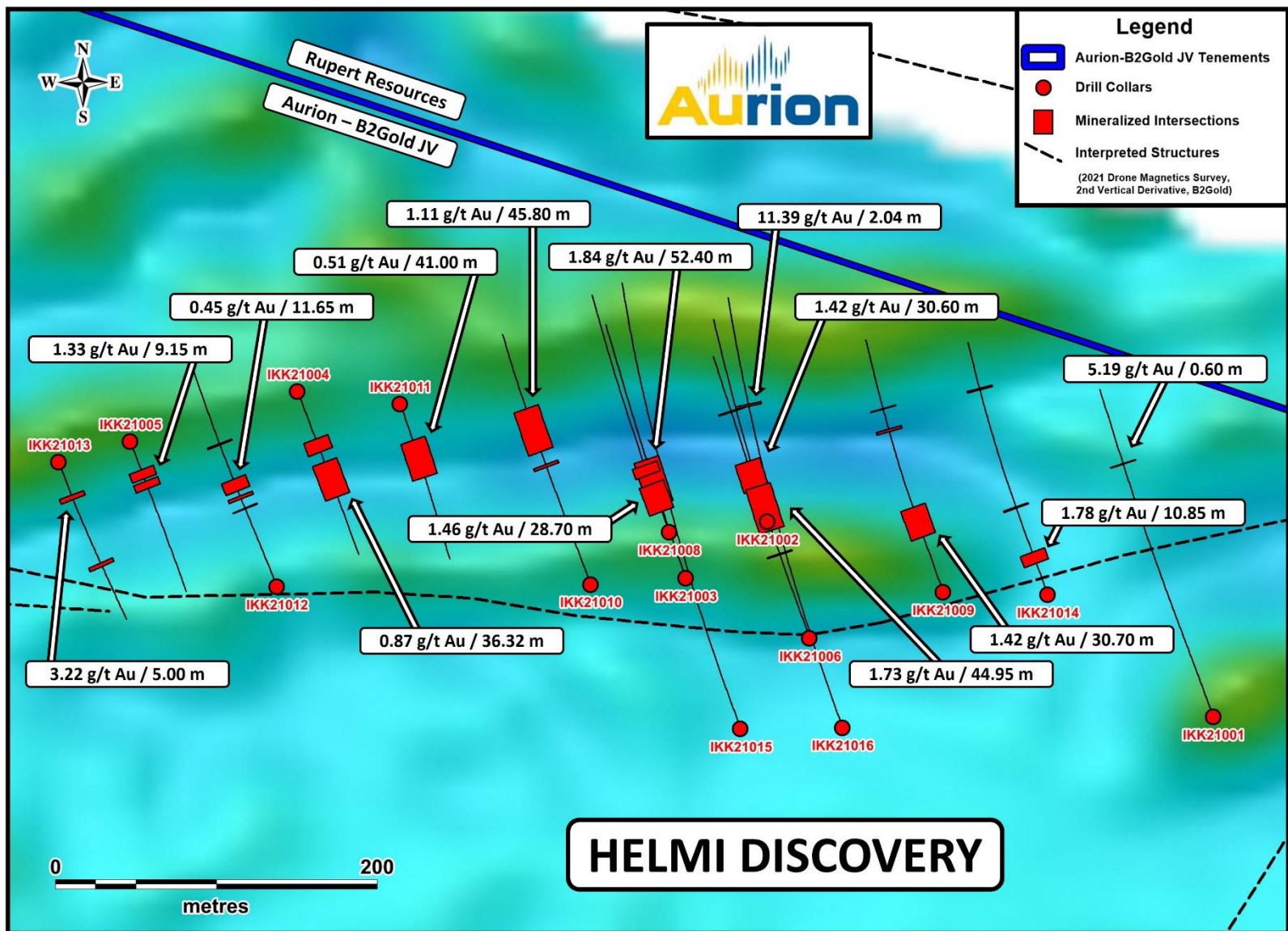
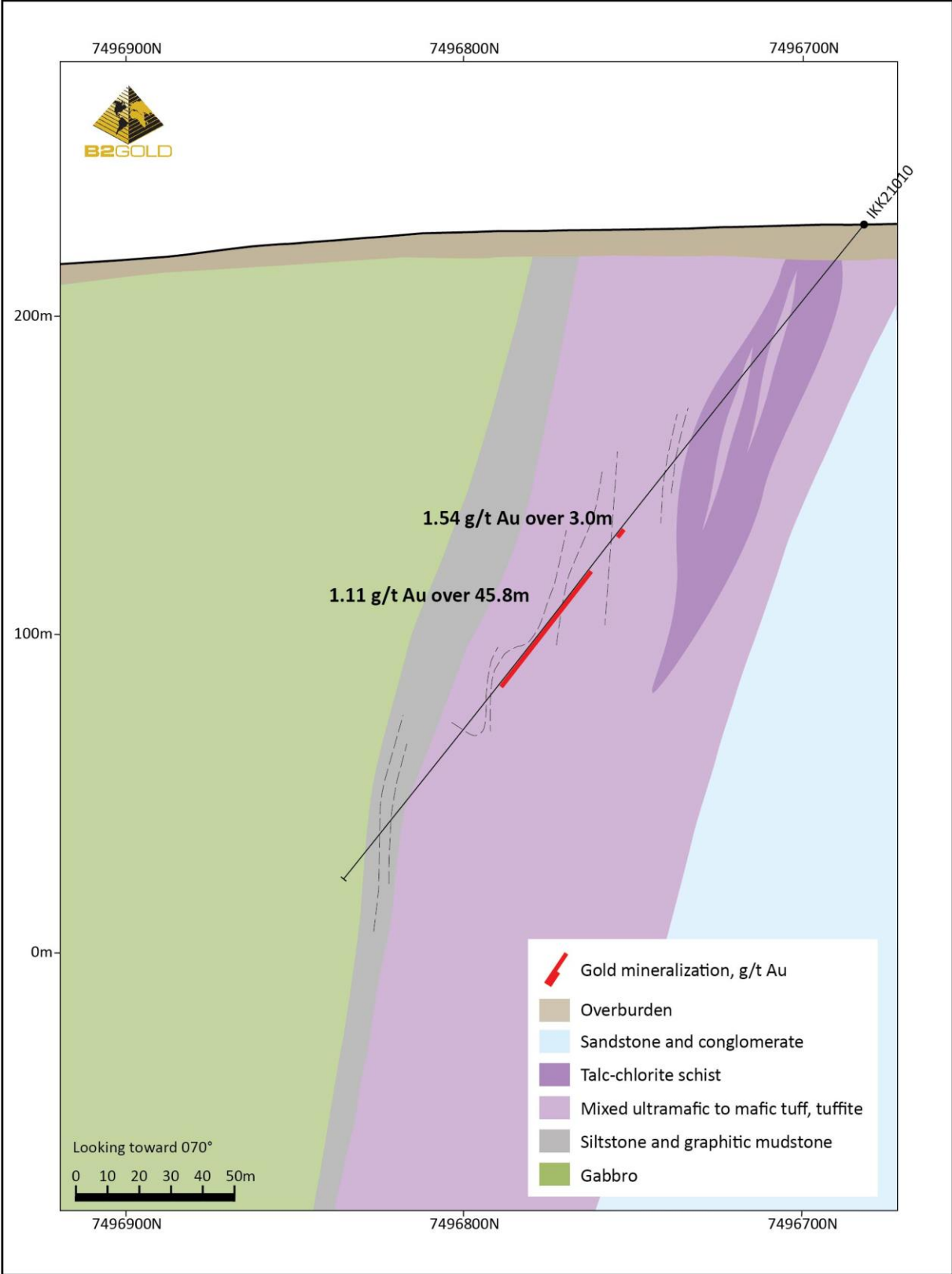
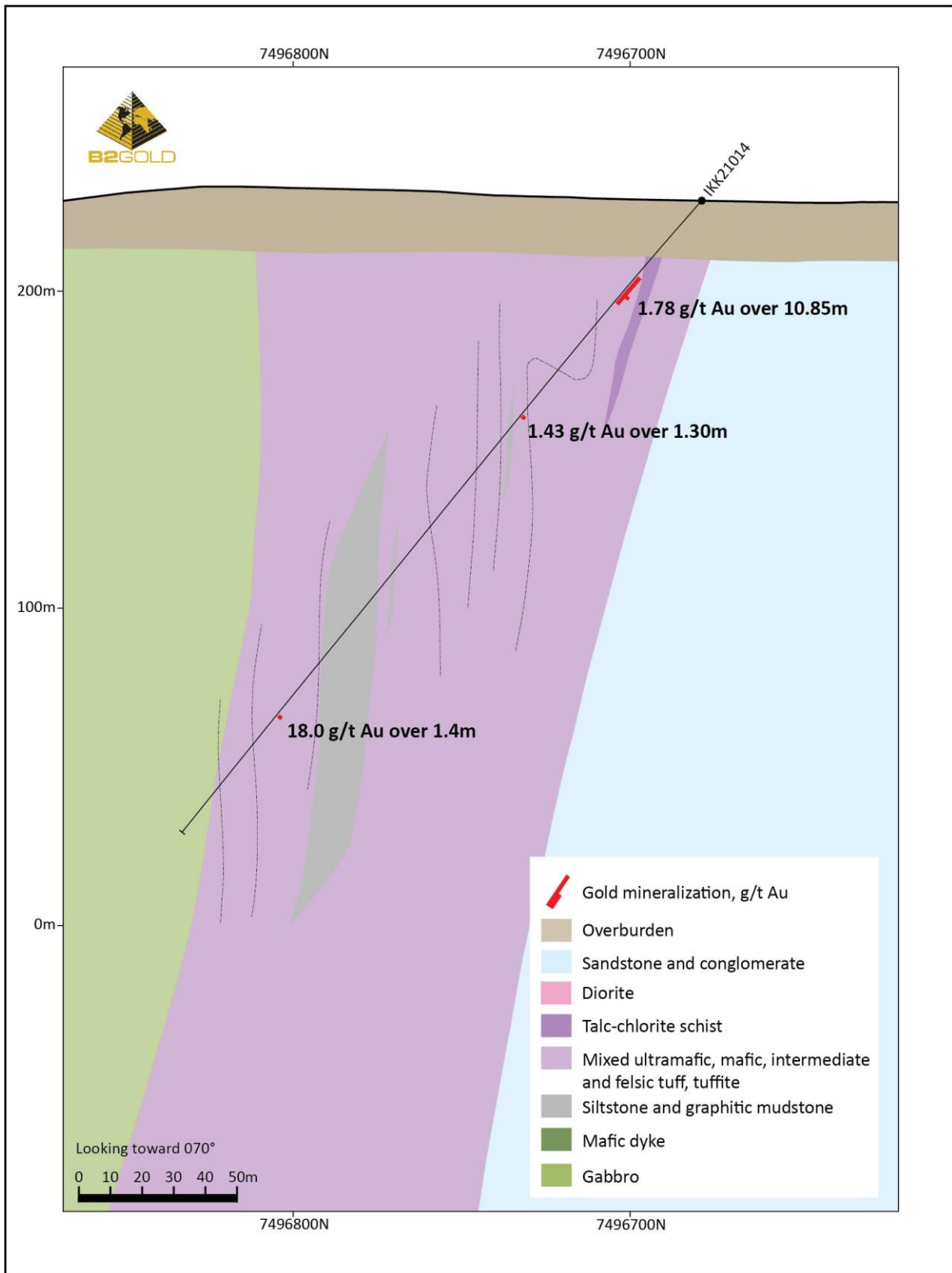


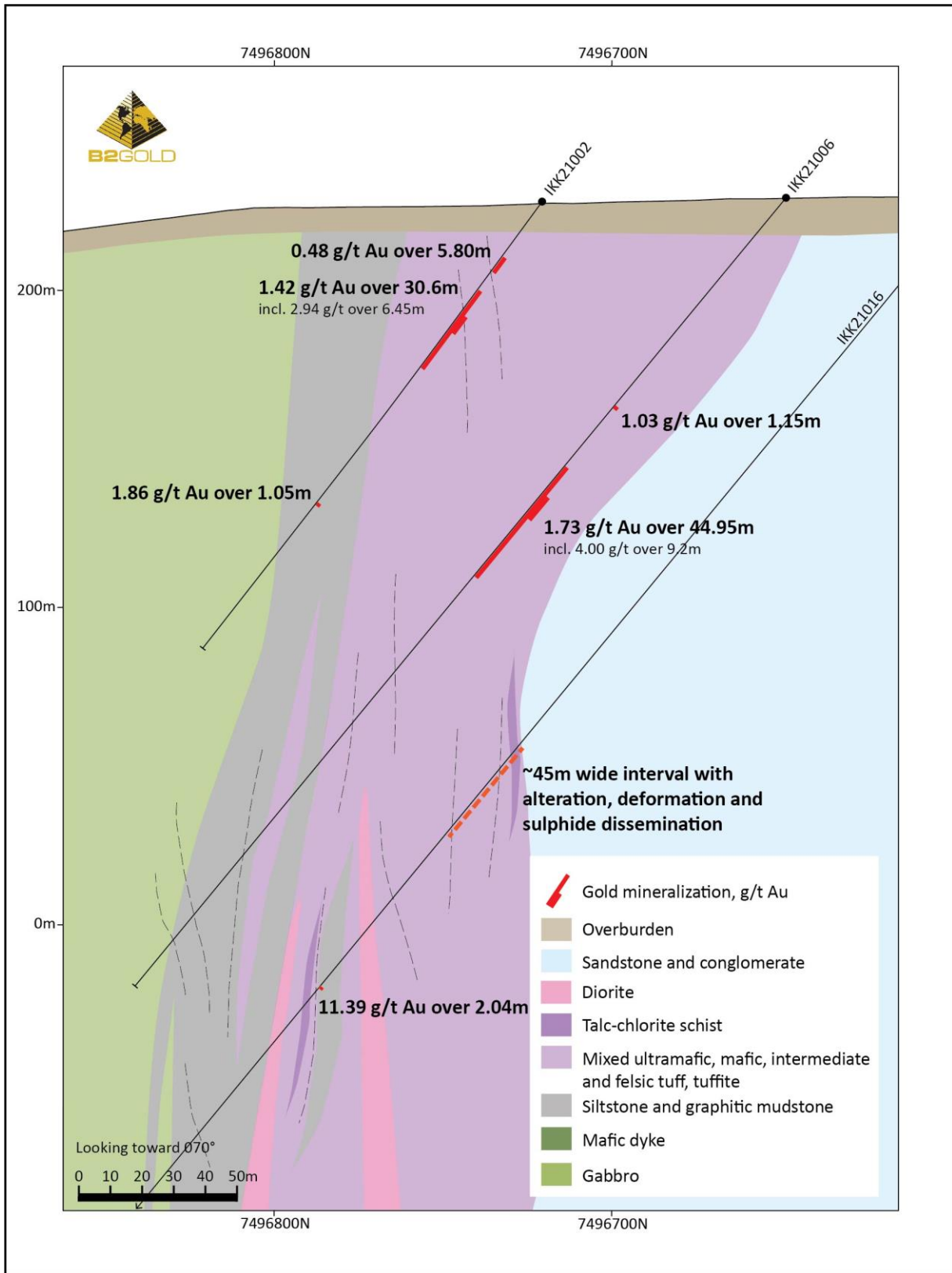
Figure 3: Drill hole locations. Aeromagnetic map as background.



**Figure 4: Cross section, holes IKK21010**



**Figure 5: Cross section, hole IKK21014**



**Figure 6: Cross section, holes IKK21002, IKK21006, IKK21016**



Figure 7: IKK21010, 184.0 m. Gold grade 1.55 g/t. Interfolial pyrite in chlorite-biotite-Kfeldspar altered felsic tuff.



Figure 8: IKK21011, 97.7 m. Gold grade 1.18 g/t. FeMg-carbonate-chlorite-altered mafic volcanic with quartz-dolomite-magnetite-specular hematite-pyrite vein in mafic volcanic .

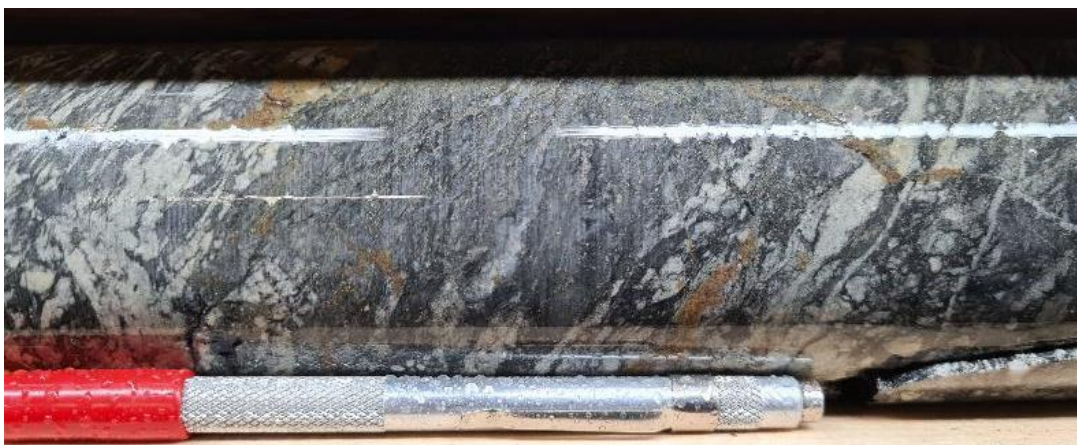


Figure 9: IKK21013, 40.6 m. Gold grade 13.25 g/t. Interfolial pyrite in sericite-silica altered mafic tuff.