



Rupert Resources

Aurion - B2Gold JV

**2021/22 Drilling
Kutuvuoma East**
 DDH 39.40 g/t Au / 1.40 m
 DDH 0.71 g/t Au / 36.00 m
 DDH 5.70 g/t Au / 2.00 m

Ikkari
 Rupert Resources Ltd.
 Maiden Inferred Resource
 (Sept.13/2021)
 49 million tonnes @ 2.5 g/t
 Au (3.95 moz)

Kutuvuoma
 DDH 11.4 g/t Au / 13.3 m
 DDH 7.2 g/t Au / 19.4 m
 DDH 6.74 g/t Au / 5.60 m

Figure 2

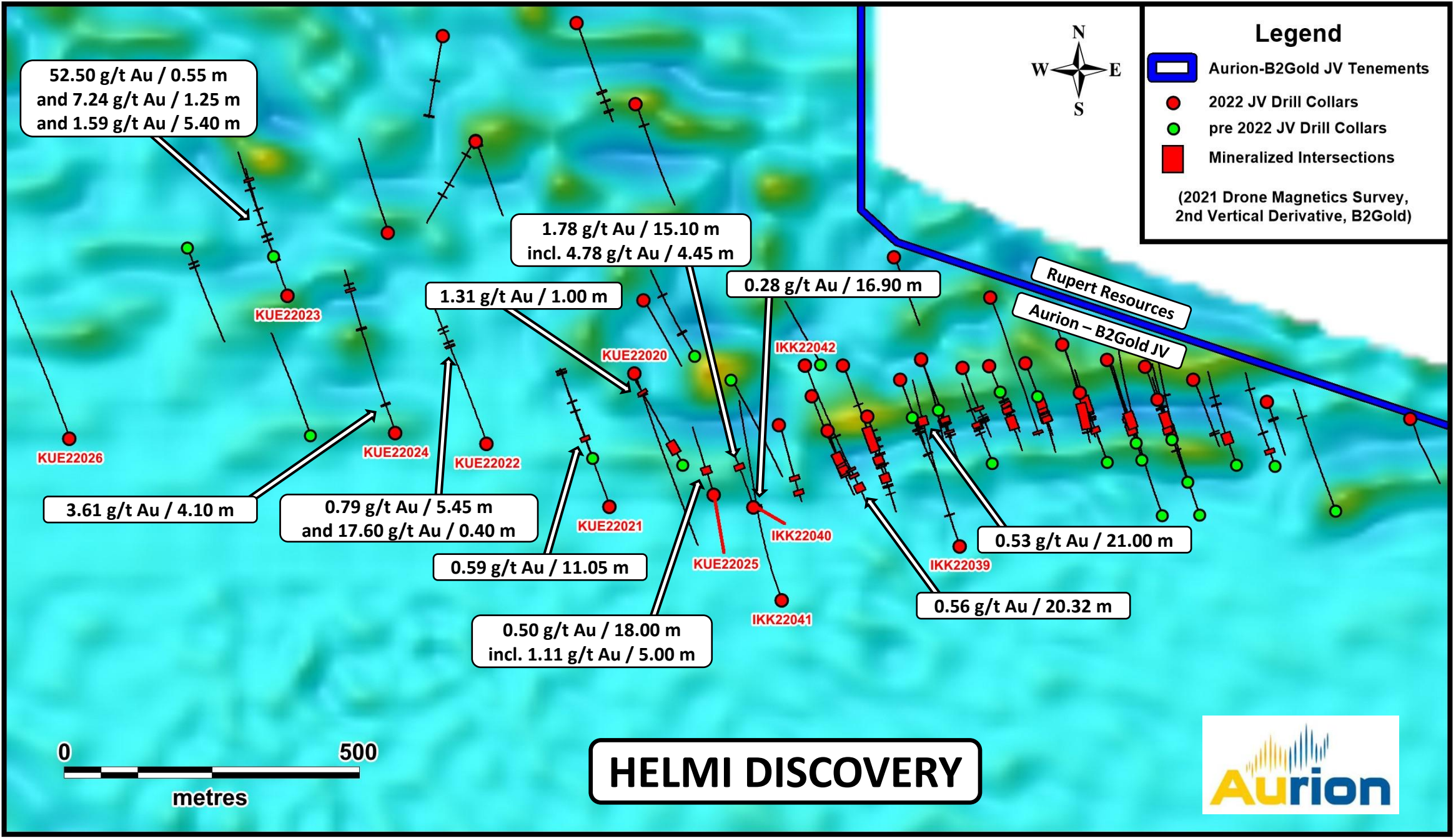
**2021/22 Drilling
Helmi**
 DDH 2.05 g/t Au / 77.50 m
 DDH 2.44 g/t Au / 43.45 m
 DDH 1.44 g/t Au / 67.20 m
 DDH 1.84 g/t Au / 52.40 m
 DDH 0.82 g/t Au / 108.10 m
 DDH 1.73 g/t Au / 44.95 m

Aurion 100%

- Legend**
- Aurion 100% Tenements
 - Aurion-B2Gold JV Tenements
 - Kumpu Group Sediments
 - Ultramafic/Mafic Volcanics
 - Mafic Volcanics
 - Graphitic Sediments
 - Sedimentary Rocks
 - Gabbro
 - Au Occurrences
 - Interpreted Structures



(1:200,000 Bedrock Geology of Finland
© GTK (2015), modified after B2Gold)



Legend

- Aurion-B2Gold JV Tenements
- 2022 JV Drill Collars
- pre 2022 JV Drill Collars
- Mineralized Intersections

(2021 Drone Magnetics Survey, 2nd Vertical Derivative, B2Gold)



52.50 g/t Au / 0.55 m
and 7.24 g/t Au / 1.25 m
and 1.59 g/t Au / 5.40 m

1.78 g/t Au / 15.10 m
incl. 4.78 g/t Au / 4.45 m

1.31 g/t Au / 1.00 m

0.28 g/t Au / 16.90 m

Rupert Resources
Aurion - B2Gold JV

KUE22026

KUE22023

KUE22020

IKK22042

KUE22024

KUE22022

3.61 g/t Au / 4.10 m

0.79 g/t Au / 5.45 m
and 17.60 g/t Au / 0.40 m

KUE22021

KUE22025

IKK22040

0.53 g/t Au / 21.00 m

0.59 g/t Au / 11.05 m

0.56 g/t Au / 20.32 m

0.50 g/t Au / 18.00 m
incl. 1.11 g/t Au / 5.00 m

IKK22041

IKK22039



HELMI DISCOVERY

